

How To Clean Your Odyssey Popper

Daily Cleaning Procedure

The instructional content provided is for general informational purposes only. It is to be used as a reference and is not to be considered a complete or exhaustive resource. Users should always consult the appropriate product manual for specific step-by-step instructions. If you are in need of further assistance, please contact Gold Medal directly at 800-543-0862 or email info@gmpopcorn.com.

UNDER NO CIRCUMSTANCES SHOULD THE KETTLE BE REMOVED FROM THE MACHINE FOR CLEANING
A hot kettle will cause burns. DO NOT use ice or water to cool down a hot kettle or severe kettle damage will occur.
TOTAL CLEANING TIME: Approximately 10 Minutes



1

When COOL, wipe the outside of the kettle with a clean soft cloth. DO NOT use oven cleaners or abrasive materials as they will damage the kettle.



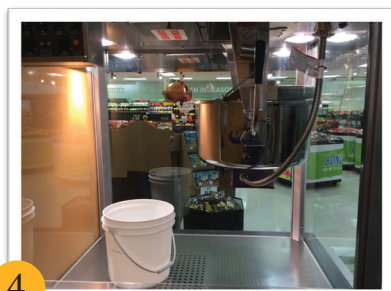
2

Every night, mix Gold Medal's Heat 'n Kleen solution, 2 tbsp per gallon of water. It is not necessary to use the entire gallon; only use enough to fill the kettle ½ inch deep.



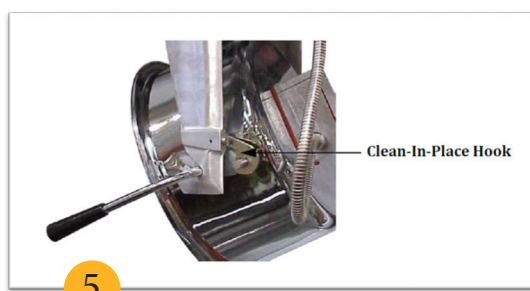
3

Turn kettle heat ON. When water starts to boil, turn kettle heat off.



4

Allow to cool at least 1 hour, then dump solution into a bucket and wipe the inside clean.



5

Use the Clean-In-Place hook is located behind the kettle support arm. Tilt kettle in the dump position and swing the hook into position.



6

With unit OFF and unplugged, wipe the lead kettle cord with a clean SLIGHTLY damp cloth. DO NOT get moisture into the kettle lead in cord, severe damage will occur.

How To Clean Your Odyssey Popper

Daily Cleaning Procedure

The instructional content provided is for general informational purposes only. It is to be used as a reference and is not to be considered a complete or exhaustive resource. Users should always consult the appropriate product manual for specific step-by-step instructions. If you are in need of further assistance, please contact Gold Medal directly at 800-543-0862 or email info@gmpopcorn.com.

UNDER NO CIRCUMSTANCES SHOULD THE KETTLE BE REMOVED FROM THE MACHINE FOR CLEANING
A hot kettle will cause burns. DO NOT use ice or water to cool down a hot kettle or sever kettle damage will occur.
TOTAL CLEANING TIME: Approximately 10 Minutes



7

Turn machine OFF, unplug unit and allow it to cool before attempting to clean.



8

Clean all pans/accessories in order to sanitize them before each use.



9

Clean under the corn pan to remove all popcorn bits and seeds.



10

Take a clean, SLIGHTLY damp cloth and wipe excess grease from the glass and cabinet.



11

Wipe stainless steel parts with a clean cloth and cleaner designed for stainless steel, such as Gold Medal Watchdog Stainless Cleaner. Do NOT use oven cleaners or abrasive materials as it will damage parts of the machine.



12

Clean glass panels. Gold Medal Watchdog Glass Cleaner (Item No. 2588) is recommended.

Ammonia cleaners will damage the plastic doors. Use only non-ammonia cleaners.

How To Clean Your Odyssey Popper Daily/Weekly Filter Cleaning Procedure

The instructional content provided is for general informational purposes only. It is to be used as a reference and is not to be considered a complete or exhaustive resource. Users should always consult the appropriate product manual for specific step-by-step instructions. If you are in need of further assistance, please contact Gold Medal directly at 800-543-0862 or email info@gmpopcorn.com.

Follow the directions for daily filter cleaning.

TOTAL REASSEMBLY TIME: Approximately 10 Minutes

Step 1: Daily Filter Cleaning

Turn unit OFF and allow it to cool before removing any filters.

Remove the first Mesh Filter, and clean it each day after use. This filter can be removed without taking off the filter cover. See Step 3 for instructions on cleaning the Mesh Filter.

Clean first Mesh Filter daily.

Step 2: Weekly Filter Cleaning

Loosen the 2 screws on the filter cover plate, on the ceiling inside the popper. Remove the cover, the Bag Filter, and the 2 Mesh Filters.

Loosen
2 Screws



Step 3: Clean the bag filter and mesh filters in warm soapy water, then rinse. Let dry overnight, then reinstall.

CAUTION: It is important to keep the filters clean, to let the exhaust system do its job.



Oil Mist Bag Filter



(2) Metal Mesh Filters